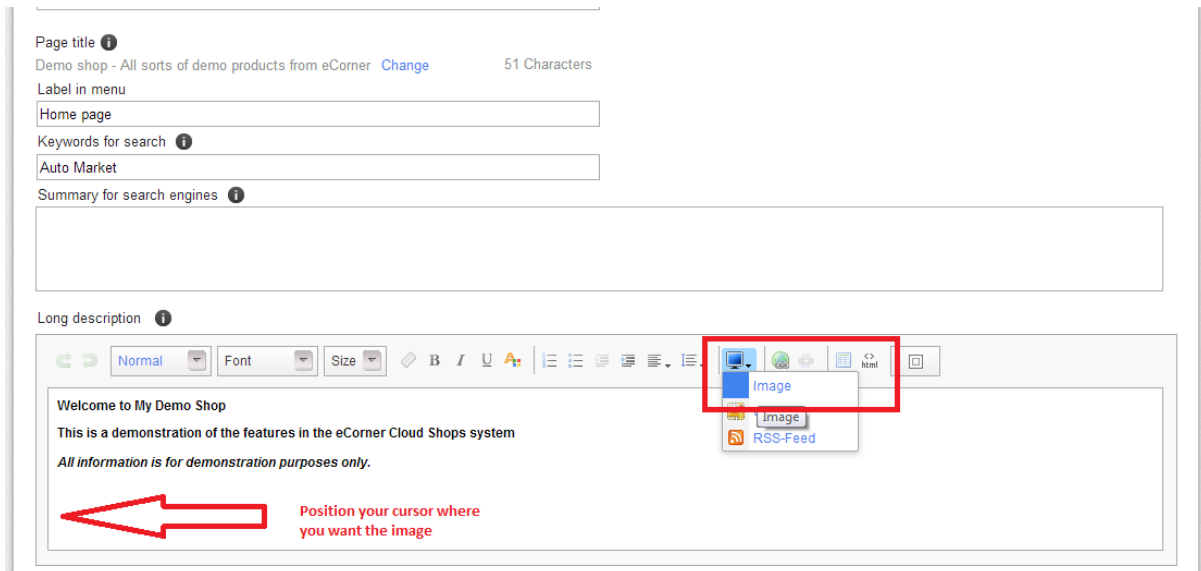


Adding images with new editor

Using datasheet mode or in products content.

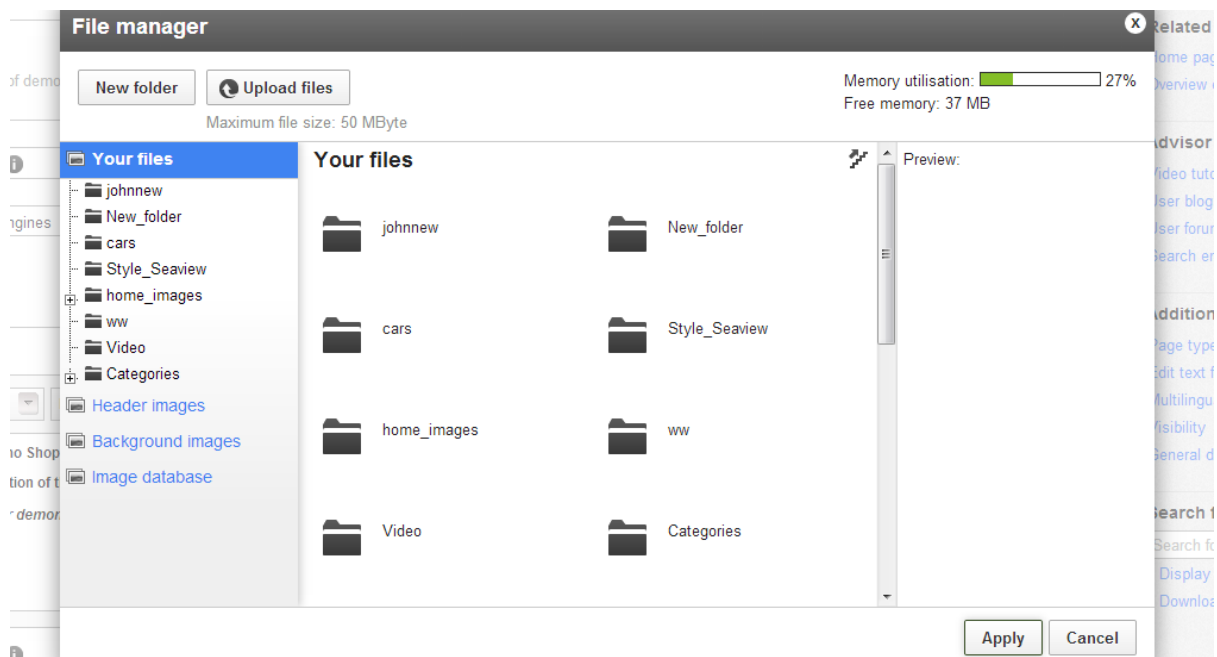
1. Put cursor where you want the image to appear
2. Click on the media drop down and select “Image”

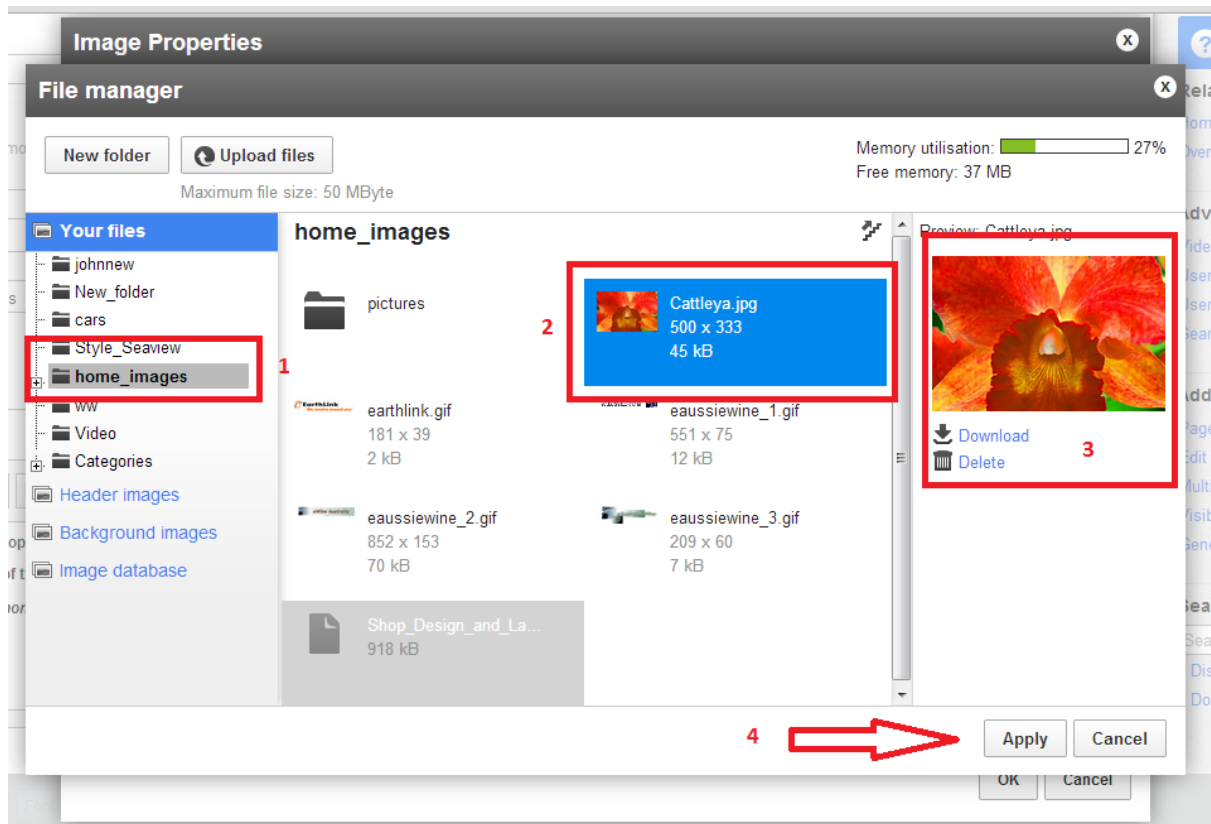


New screen will appear as follows if it does not appear then click on the “Upload image” button on the top left of the box that you see.

If the image is already in the file system then

1. select the correct folder containing the image and
2. then select the image a preview (3) will appear on the right.

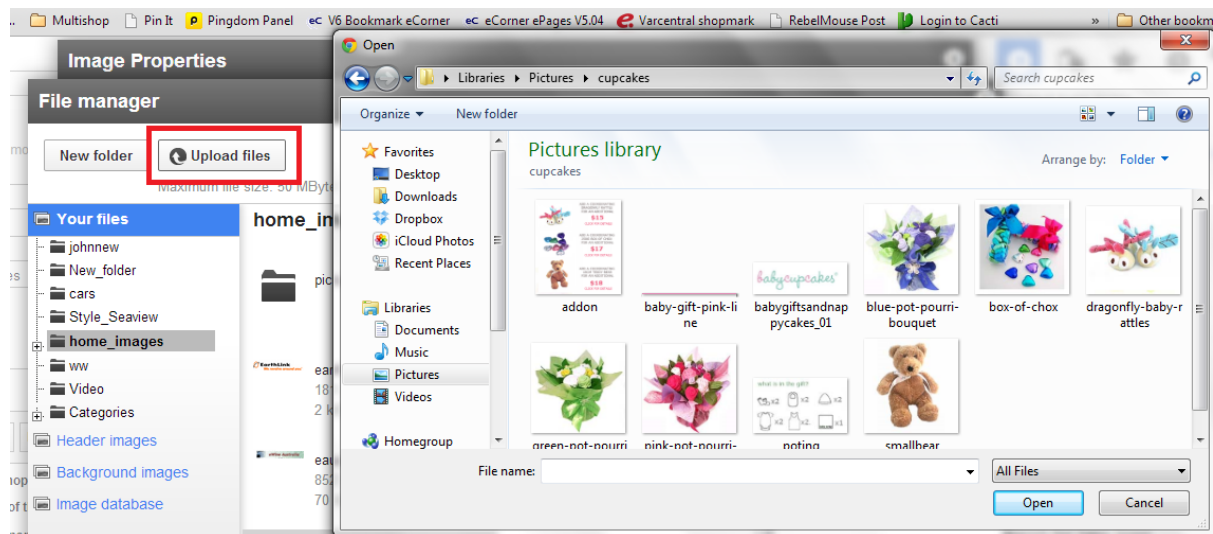




Once you have selected the image then 4. click on “Apply”.

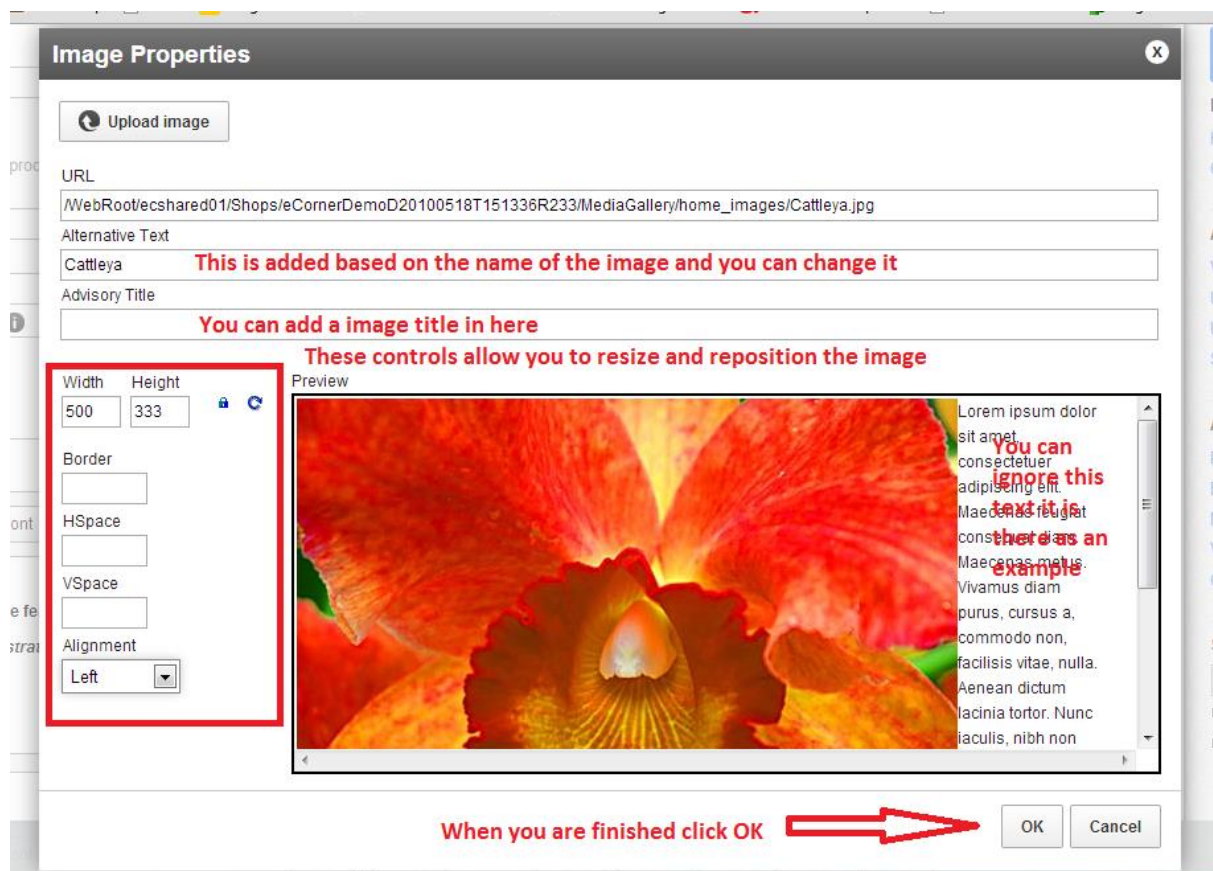
If the image is not in the file system then select the folder where you want to store the image and then click on “Upload image”. A file browse window from your computer file system will appear and you can select one or multiple images to upload. After uploading the image follows the instructions as above.

Adding images with new editor



Once you have added the image the Image Properties box will appear and you can modify the image as below. You cannot change the image URL.

Once you have finished click on OK.



Adding images with new editor

You will be returned to the content area in the data sheet view and you will see the image in the content window. Update the cache and you can then preview the page.

